

## 4.1 HOME SCIENCE (441)



### 4.1.1 Home Science Paper 1 (441/1)

#### SECTION A (40 marks)

Answer *all* the questions in this section in the spaces provided.

- 1 Give another name for the following nutrients. (2 marks)
- (i) Tocopherol.....
  - (ii) Retinol .....
  - (iii) Cholecalciferol.....
  - (iv) Phylloquinone.....
- 2 List **four** qualities of containers used to freeze foods. (2 marks)
- 3 Name **two** nutritional disorders associated with lack of calcium in the body. (1 mark)
- 4 State **two** reasons why charcoal must be red hot before roasting meat. (2 marks)
- 5 Arrange the following food items into a three course meal. (3 marks)
- Ugali  
Vanilla cake  
Saute' kales  
Tomato soup  
Custard sauce  
Stewed fish  
bread rolls.
- 6 Give **two** ways of preventing the spread of dandruff. (2 marks)
- 7 State **three** reasons why physical body exercise should be encouraged. (3 marks)
- 8 List **six** soft furnishings used in the bedroom. (3 marks)
- 9 State **three** points to bear in mind when choosing a hurricane oil lamp. (3 marks)
- 10 Highlight **two** precautions to take on a limb after a snake bite. (2 marks)
- 11 Describe competitive advertising. (2 marks)

- 12 Give **two** methods of sterilizing bath towels. (1 mark)
- 13 State **two** uses of fabric conditioners. (2 marks)
- 14 What is the function of each of the following parts of a sewing machine. (3 marks)
- (i) spool pin.....
- (ii) feed dog.....
- (iii) tension disc.....
- 15 What is the function of the fishbone stitch? (1 mark)
- 16 Outline **three** qualities of a well-made facing. (3 marks)
- 17 List **four** undergarments made from elastomeric fabric. (2 marks)
- 18 State **two** functions of pockets in a garment. (1 mark)
- 19 Give **two** reasons why easing is commonly worked on the crown of a sleeve. (2 marks)

**SECTION B (20 marks)**

**(COMPULSORY)**

*Answer question 20 in the spaces provided.*

- 20 You are planning to attend your sister's pre-wedding party.
- (a) Describe the procedure you would follow to launder a silk blouse/shirt you intend to wear. (12 marks)
- (b) Outline the steps you would follow to thorough clean the dressing mirror you will use. (8 marks)
- Do not use commercial cleaners.**

**SECTION C (40 marks)**

*Answer any two questions from this section in the spaces provided at the end of this section.*

- 21** (a) Explain **four** points to consider when buying a sewing machine. (8 marks)
- (b) Explain **three** factors to consider when caring for a white nylon shirt. (6 marks)
- (c) Differentiate between:
- (i) wear and tear;
  - (ii) a casing and a hem;
  - (iii) regenerated and synthetic fabrics. (6 marks)
- 22** (a) Identify the life style associated with each of the following nutritional disorders:
- (i) gout;
  - (ii) anorexia Nervosa;
  - (iii) obesity;
  - (iv) hypertension. (4 marks)
- (b) Explain **four** advantages of using convenience foods. (8 marks)
- (c) Explain **four** factors to consider when setting a table. (8 marks)
- 23** (a) (i) Mention **two** sources of light (1 mark)
- (ii) Explain **three** reasons for providing appropriate lighting in a sickroom. (6 marks)
- (b) Explain **four** points to observe in the care of lighting fixtures. (8 marks)
- (c) Give **five** possible causes of pre-mature birth. (5 marks)

#### 4.1.2 Home Science Paper 2 (441/2)

A pattern of a child's dress is provided. You are advised to study the sketches, instruction and the layout carefully before you begin the test.

#### Materials provided.

1 Pattern pieces

- A. Dress Back
- B. Dress Front
- C. Front Yoke
- D. Sleeve
- E. Sleeve binding
- F. Back Facing
- G. Front Facing

2 Plain lightweight cotton fabric 65 cm long by 90 cm wide.

3 Sewing thread to match the fabric.

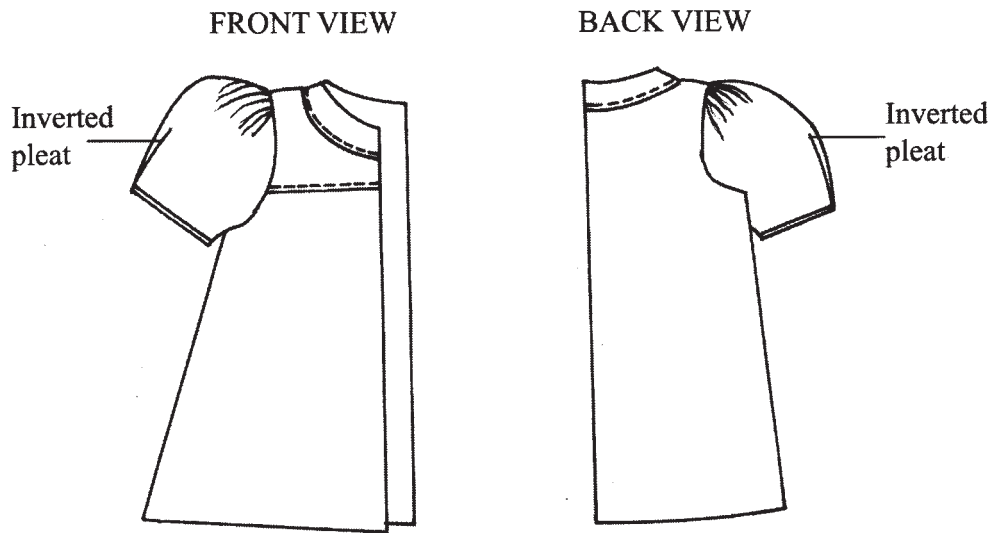
4 One large envelope.

#### THE TEST

Using the material provided, cut out and make the **RIGHT HALF** of a child's dress to show the following processes:

- (a) attaching the front yoke to the dress front using an overlaid seam. Neaten **half** of the seam using overcasting stitches;
- (b) joining of the shoulder seam using an open seam (**do not neaten**)
- (c) joining of the side seam using an open seam;
- (d) preparing of the sleeve;
  - (i) making an inverted pleat;
  - (ii) joining the underarm seam using an open seam (**do not neaten**);
  - (iii) attaching the binding and holding it using slip hemming (slip hem **half** the binding);
- (e) attaching of sleeve onto the garment (**do not trim or neaten**);
- (f) attaching the facing on the neckline.

At the end of the examination, firmly sew on your work, on a single fabric, a label bearing your name and index number. Remove needles, and pins from your work then fold your work neatly and place it in the envelope provided. Do not put scraps of fabric in the envelope.



THE LAYOUT (NOT DRAWN TO SCALE)

